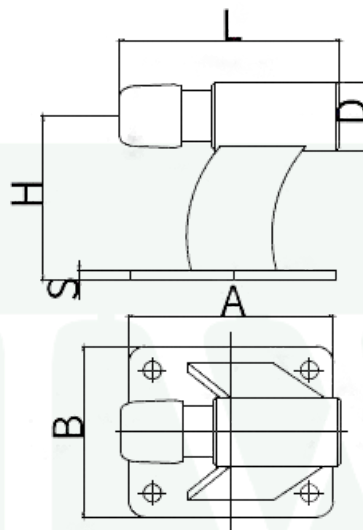
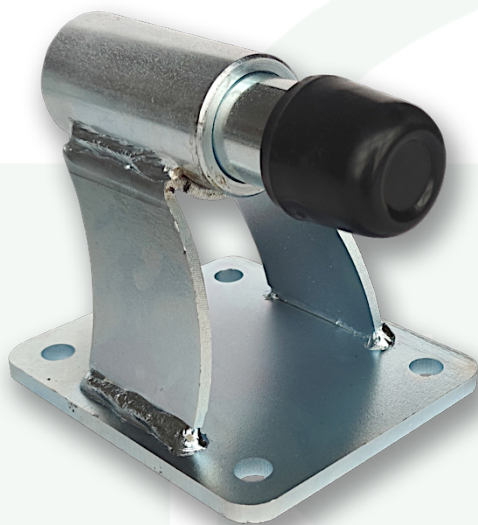


## KW-441133

## Heavy Duty Spring Loaded Bottom Stopper

### Description:

The Spring-Loaded Bottom Stopper is a safety and control accessory used in sliding gate systems to absorb impact, reduce noise, and protect the gate from damage at the end of its travel. Installed at the bottom end of the gate track or rail, it prevents the gate from sliding off or hitting hard against the post. Its integrated spring mechanism cushions the stopping force, ensuring smooth, controlled deceleration and extending the life of both the gate and its components.



**FIXING:** To be fixed to ground with special bolts (not provided)

**MATERIAL:** Electrogalvanized Steel body, rubber cap.

**PARTS SUBJECT TO WEAR:** Cap

#### FEATURES:

- Spring mechanism cushions the gate at closing, reducing shock and stress.
- Rubber cap prevents metal-to-metal contact, promoting noise reduction.
- Pre-drilled base plate for easy & secure bolt-on installation at the rail end.
- Corrosion-resistant finish (Galvanized)
- Compatible with U-Groove, V-Groove, and flat-bottom sliding gate mechanisms.

Article No.	A (mm)	B (mm)	D (mm)	H (mm)	L (mm)	S (mm)	Load (KG)**
KW-441133.AA	120	100	Ø45	84.5	112 – 132	6	10000

#### MAINTENANCE:

- 1) Ensure that the nuts are securely fastened after assembly. In any case, check the attachment periodically. Mount so that no vibrations or shocks occur.
- 2) If the supports have been subjected to impact caused by moving vehicles or other factors, make sure the article have remained intact, still properly fixed, and that its operation has not been compromised in any way.

**IMPORTANT:** The manufacturer reserves the right to modify the characteristics of the article as required without notice. The manufacturer declines any liability for even partial modifications to the article, and the declared performance values are valid only if the installation procedures are carried out by qualified personnel.

Maintenance Frequency				
Private Home	Business	Warehouse	Condominium < 20 Units	Condominium > 20 Units
1 Year*	1 Year*	1 Year*	6 Months*	6 Months*
Check the rubber cap. Check for any deformation on striker. Check fixing.				
*This scheme refers to a normal workplace (not marine or particularly aggressive environments).				
**The loading capacity is calculated on basis of automatic operation of the gate using automatic remote control operator.				

**KW-441133**

**Heavy Duty Spring Loaded Bottom Stopper**

**Sustainable impact**

