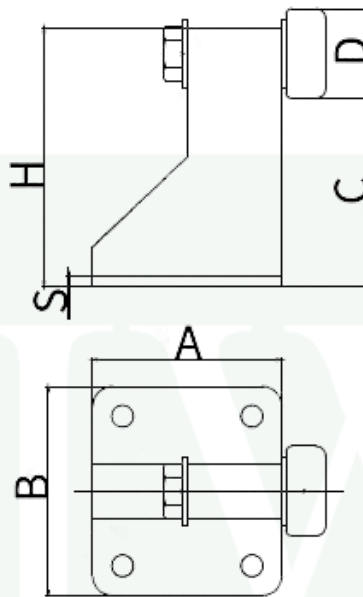
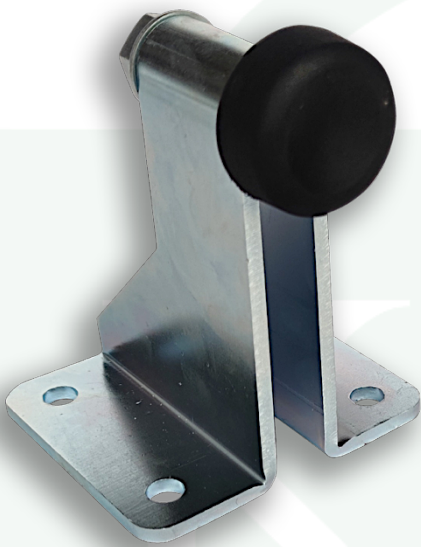


KW-441122

Heavy Duty Adjustable Bottom Stopper

Description:

The Heavy Duty Adjustable Bottom Stopper is a robust gate accessory designed to safely limit the travel of sliding gates, protect gate structures from impact damage, and provide smooth, cushioned stopping action. Unlike standard stoppers, this model is **adjustable**, allowing installers to fine-tune the stopping height position to suit specific gate openings. Built for long-term outdoor use, it is engineered to handle the extreme loads and high operating frequency of industrial and commercial gates.



FIXING: To be fixed to ground with special bolts (not provided)

MATERIAL: Electrogalvanized Steel body, rubber cap.

PARTS SUBJECT TO WEAR: Rubber block.

FEATURES:

- Heavy Duty rubber buffer block to reduce shocks and mechanical stress.
- Rubber cap prevents metal-to-metal contact, promoting noise reduction.
- Pre-drilled base plate for easy & secure bolt-on installation at the rail end.
- Corrosion-resistant finish (Galvanized)
- Compatible with U-Groove, V-Groove, and flat-bottom sliding gate mechanisms.

Article No.	A (mm)	B (mm)	D (mm)	H (mm)	C (mm)	S (mm)	Load (KG)**
KW-441122.AA	105	105	Ø45	130	46 – 93	5	5000

MAINTENANCE:

- 1) Ensure that the nuts are securely fastened after assembly. In any case, check the attachment periodically. Mount so that no vibrations or shocks occur.
- 2) If the supports have been subjected to impact caused by moving vehicles or other factors, make sure the article have remained intact, still properly fixed, and that its operation has not been compromised in any way.

IMPORTANT: The manufacturer reserves the right to modify the characteristics of the article as required without notice. The manufacturer declines any liability for even partial modifications to the article, and the declared performance values are valid only if the installation procedures are carried out by qualified personnel.

Maintenance Frequency				
Private Home	Business	Warehouse	Condominium < 20 Units	Condominium > 20 Units
1 Year*	1 Year*	1 Year*	6 Months*	6 Months*
Check the rubber cap. Check for any deformation on striker. Check fixing.				
*This scheme refers to a normal workplace (not marine or particularly aggressive environments).				
**The loading capacity is calculated on basis of automatic operation of the gate using automatic remote control operator.				

Sustainable impact

