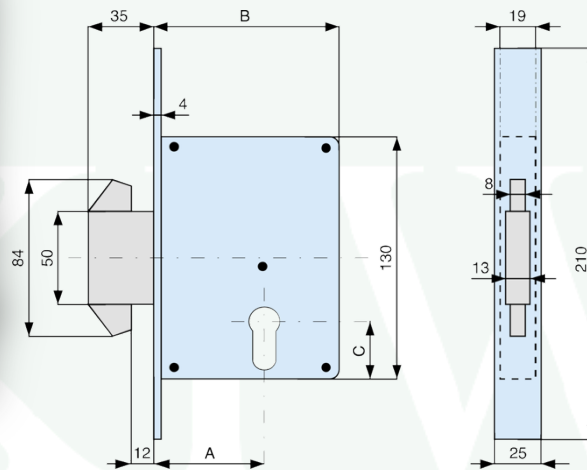


KW-3570

Double Re-entering Hook Lock for Sliding Gates

Description:

The Double Re-Entering Hook Lock is a **high-security locking mechanism** specifically designed for sliding gates. Unlike standard latch or bolt locks, this lock uses a **dual hook design** that re-enters into the strike plate, firmly securing the gate in both directions. The "double re-entering" feature provides maximum resistance against forced entry, gate lifting, or prying, making it ideal for residential, commercial, and industrial applications where **strength, durability, and safety** are essential.



FIXING: To be fixed in box section of gate (cylinder + key not provided)

MATERIAL:

- Brass double re-entering hook bolts with 3 throws.
- Zinc electrogalvanized coated steel lockbox and internal components.
- All zinc electrogalvanized coated materials are coated in accordance with the norm UNI ISO 2081:2018 and are 5.9µm to 10.7µm thick.

Features:

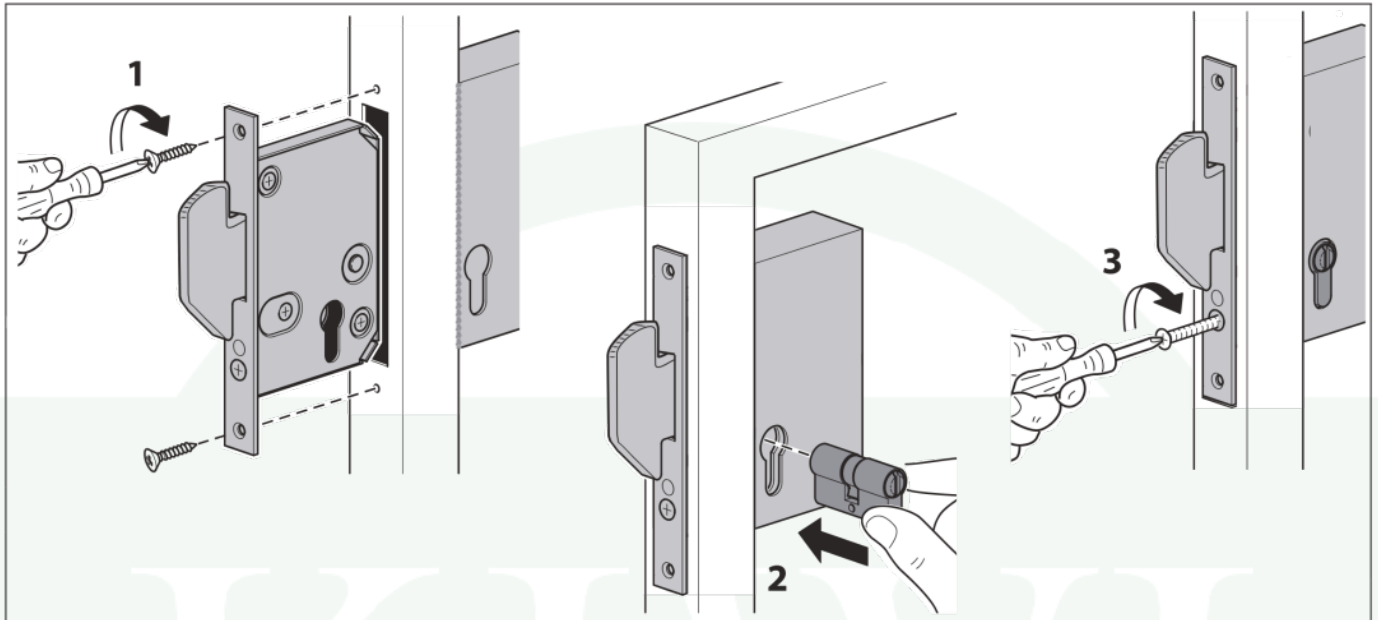
- Double re-entering hook provides a superior security compared to single-bolt or latch locks.
- Protects against forced entry and prying attacks.
- Long-lasting durability and corrosion resistant finish (Zinc / Electrogalvanized).
- Easy to operate with standard key cylinders.
- Compatible with manually operated gate system.

Article No.

A **B** **C**
(mm) (mm) (mm)

KW-3570.100	58	99	31
KW-3570.135	81	135	28

Maintenance Frequency		
Low Use <25 Operations/Day	Average Use <50 Operations/Day	High Use >50 Operations/Day
2 Year*	2 Year*	2 Years*
Check for adequate greasing in hook mechanism; Check fixing.		
*This scheme refers to a normal workplace (not marine or particularly aggressive environments).		



MAINTENANCE: To keep this article in optimum efficiency and safety is enough:

- 1) Ensure that the screws are securely fastened after assembly. In any case, check the attachment periodically. Periodically provide adequate grease in hook mechanism.
- 2) If the supports have been subjected to impact caused by moving vehicles or other factors, make sure the article have remained intact, still properly fixed, and that its operation has not been compromised in any way.

IMPORTANT: The manufacturer reserves the right to modify the characteristics of the article as required without notice. The manufacturer declines any liability for even partial modifications to the article, and the declared performance values are valid only if the installation procedures are carried out by qualified personnel.